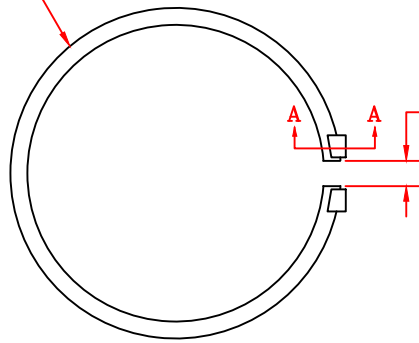
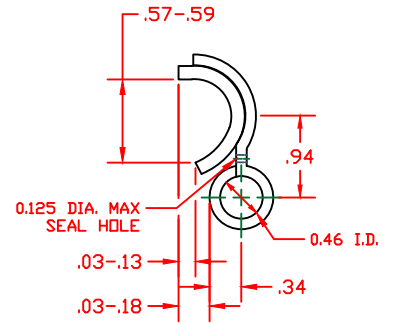
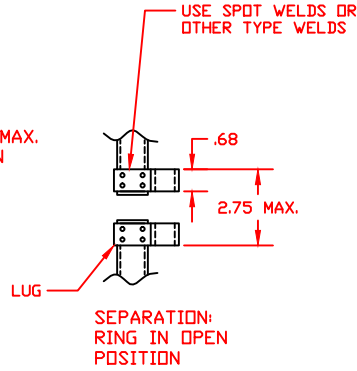


RING IN CLOSED POSITION



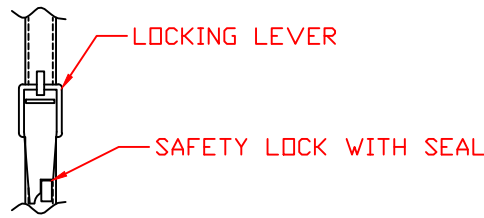
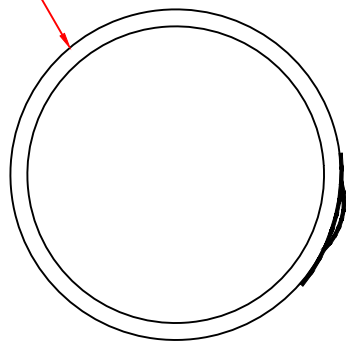
0.50 MIN.-0.75 MAX. SEPARATION



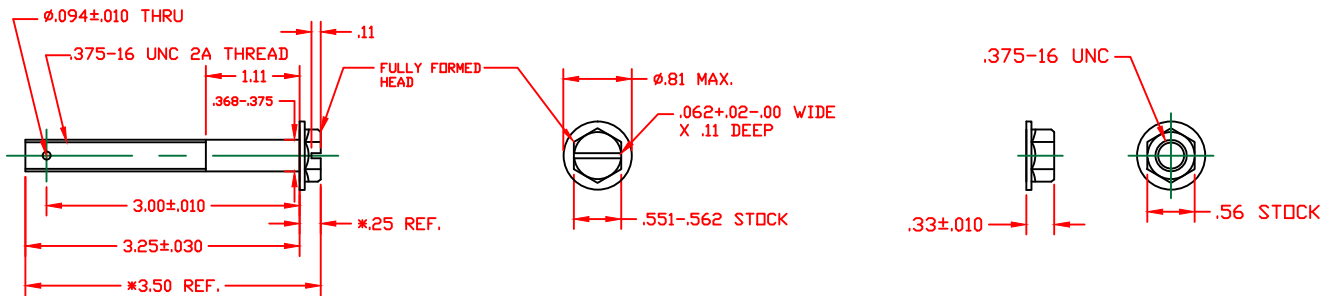
SECTION A-A

LOCKING RING STYLE 1

RING IN CLOSED POSITION



ALT. LOCKING RING STYLE 2



BOLT & NUT

| CAPACITY GALLONS | STYLE 1 LOCKING RING | STYLE 2 LOCKING RING |
|------------------|----------------------|----------------------|
| 3 THRU 8 | MS27684-31 | MS27684-35 |
| 3 THRU 8 | MS27684-31A | MS27684-35A |
| 9 THRU 12 | MS27684-32 | MS27684-36 |
| 9 THRU 12 | MS27684-32A | MS27684-36A |

MATERIAL: STEEL SPECIFICATION: ASTM A1011 OR PER PROCUREMENT SPECIFICATION, LOCKING RING: 13 GA., LUG: 12 GA.
FINISH AND MARKING: IN ACCORDANCE WITH PROCUREMENT SPECIFICATION



300 Lake Road
Medina, Ohio 44256
sales@packspec.com
(330) 723-6000, (800) 344-9271
Fax (330) 725-8180

| Tolerances | Title |
|----------------------------|-------------------------------------|
| Unless Otherwise Specified | DRUMS, METAL - SHIPPING AND STORAGE |
| xx Decimals ± .03 | 3 TO 12 GALLONS |
| xxx Decimals ± .005 | Drawing No. PSI-MS27684 - |
| Angles ± 2° | Sheet No. 3 OF 3 |
| PROCUREMENT SPECIFICATION | Date 07/08/2022 |
| MIL-DTL-6054G | Designed By |
| | Drawn By TD |
| | Checked By FT |

Do not scale this drawing. Dimensions are in inches unless otherwise indicated